

Signature



Level 1 in British Sign Language
Welcome booklet

Welcome



Welcome and thank you for choosing Signature.

We have now been promoting and teaching British Sign Language for more than 40 years and in that time we've supported over 470,000 students, just like you, to learn BSL and communicate more effectively.

We are proud of our centres and the way they work with you to develop your knowledge and skills to the highest level. To support them, we always endeavour to make sure our qualifications provide challenges and learning opportunities that will engage and inspire you to be confident communicators.

So, whether you are learning new skills that will provide a future career path or you just want to learn a new language, I wish you the best of luck with your learning and I hope you enjoy using your new BSL skills.



Lindsay Foster
Executive Director



An introduction to Signature

"Signature is the leading awarding body for deaf communication in the UK"

At Signature, we are passionate about improving communication between deaf, deafblind and hearing people, and creating better communities in the process. We want to make sure that deaf and deafblind people have the same opportunities as everyone else, and the same access to education, employment and services.

We employ highly skilled people and experts such as staff, consultants and suppliers to make sure that our centres and learners gain the strongest qualifications on the market, and receive the best customer experience.

It is by offering these qualifications that we can help to make sure the standard of support that deaf people receive is the best it can be.

Working regularly with expert consultants and native BSL users means that our assessments have the highest quality of language and content.

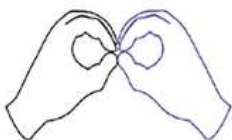
Did you know?

- All of our qualifications are accredited by Ofqual.
- Our first accredited qualification was in 2001 following the creation of the National Qualifications Framework (NQF).
- Over 480,000 people have taken our qualifications.
- CACDP re-branded to Signature in 2009.

Fingerspelling Chart



Aa



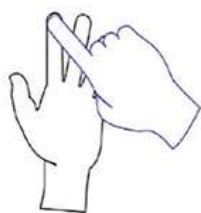
Bb



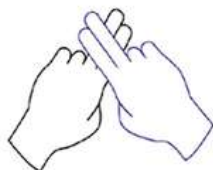
Cc



Dd



Ee



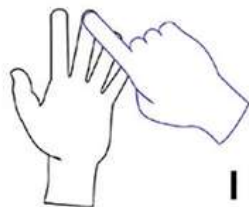
Ff



Gg



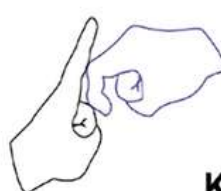
Hh



Ii



Jj



Kk



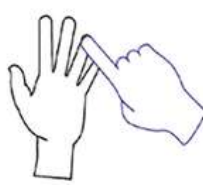
Ll



Mm



Nn



Oo



Pp



Qq



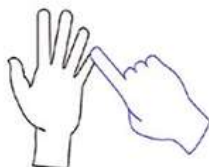
Rr



Ss



Tt



Uu



Vv



Ww



Xx



Yy



Zz



Level 1 in British Sign Language

By studying [Level 1 in British Sign Language with Signature](#), you will learn many skills and develop a completely new way of communicating. Using a practical approach, you will gain insight into the grammar of BSL, a knowledge of signs relating to everyday life and the ability to finger spell.

Qualification structure

The qualification is divided into three units, each of which can be achieved separately. Learners who are new to BSL should cover BSL101 first, as units BSL102 and BSL103 build on this knowledge. Units BSL102 and BSL103 can be taken in any order.

To achieve the full Level 1 Award in British Sign Language, candidates must pass all units.

The Qualification is split into three units:

BSL101 - Introduction to BSL

BSL102 - Conversational BSL

BSL103 - Communicate in BSL about everyday life

Qualification objectives

At the end of the qualification, learners will be able to:

- understand and use a limited range of simple words and sentences in BSL
- take part in simple, everyday conversations in BSL
- give and follow simple directions or instructions in BSL
- give and follow simple familiar statements or descriptions in BSL

To find out more information about your Level 1 qualification, visit:

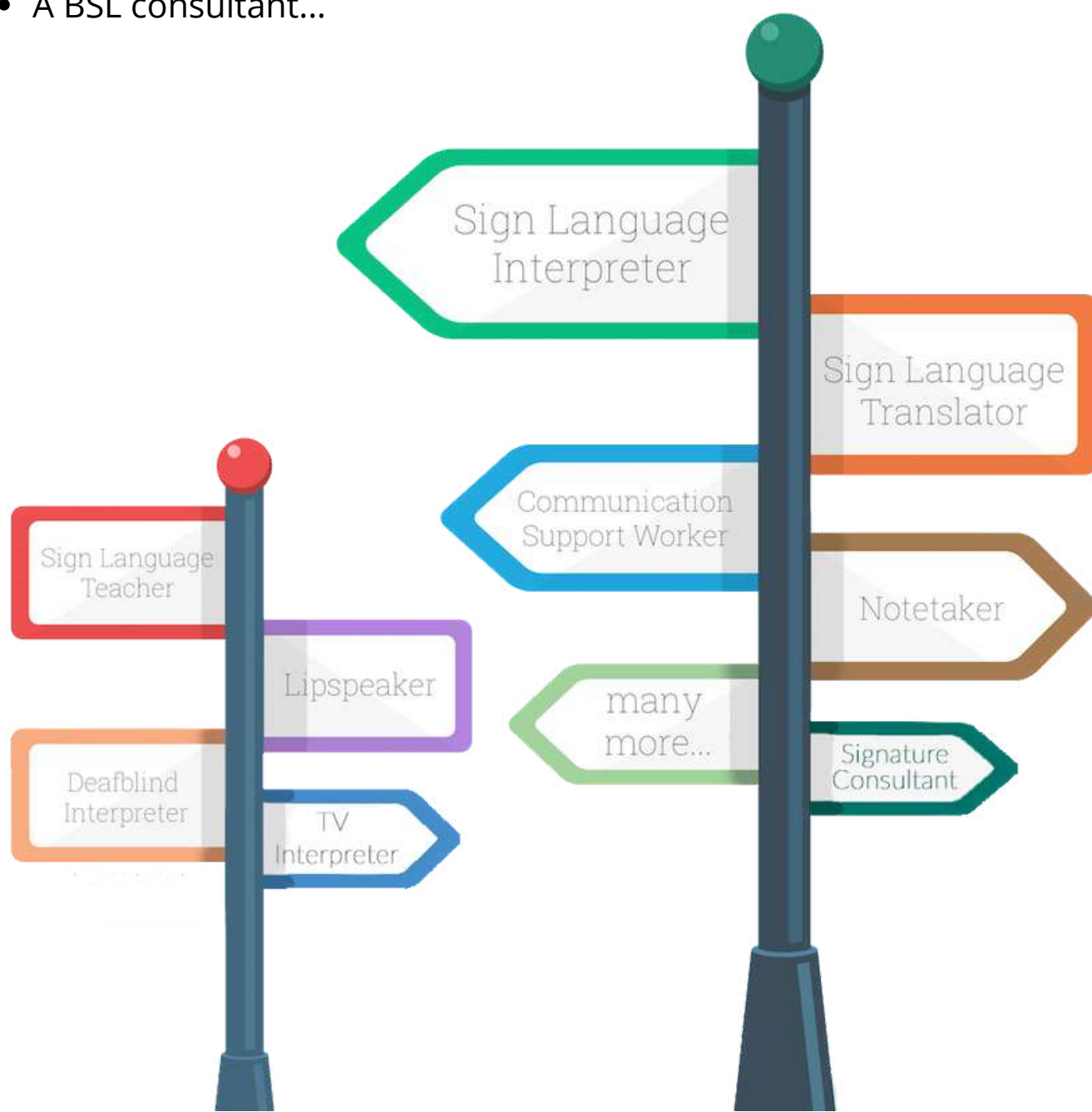
www.signature.org.uk/british-sign-language

Where could a Signature qualification take you?

A British Sign Language qualification opens the door to many exciting opportunities...

www.signature.org.uk/career-paths

- TV star?
- A teacher?
- A communication support worker?
- A BSL consultant...



What support is available?



The Signature Learning Hub is Signature's training platform. Here you will find BSLHomework, teacher training, CPD activities and SignSpell, our BSL product for primary school aged children.

BSLHomework1-2-3

BSLHomework is accessed via the Signature Learning Hub and is a comprehensive online library of video clips and support materials to help you understand the assessments, develop your vocabulary and linguistics skills, and practice your receptive BSL skills from wherever you are.

Developed by BSL teachers and experts, BSLHomework is the perfect training resource for anyone studying Level 1, 2 or 3 in British Sign Language.

With over 500 short stories in BSL presented by Deaf people from across the UK and questions to test you, it helps you practice what you have been taught in the classroom. You will also find filmed assessment examples and tips, and a BSL dictionary with over 2,000 words.

www.signaturelearninghub.co.uk

BSLHomework1extra

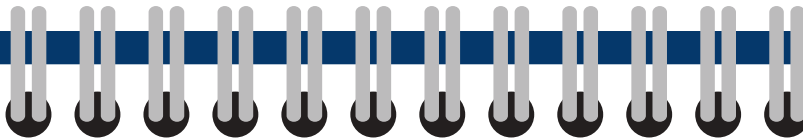
In the Signature shop you will find BSLHomework1extra available as a DVD or via digital access. The DVD features 5 short stories to support your learning, presented by a range of presenters from across the UK.



www.signature.org.uk/shop

Study Tips

Based on feedback from Signature candidates who have recently gained their BSL qualifications, we have compiled a list of useful study tips to help you get the most out of your learning experience.



- 1** Stick flashcards in important places
- 2** Repeat, repeat, repeat!
- 3** Use BSLHomework to practice your skills and revise for you exams
- 4** Write down sentence structures in sign order
- 5** Go to Deaf-led events and clubs to practice and improve your skills
- 6** Practice, practice, practice!
- 7** Sign to yourself in a mirror to see facial expression
- 8** Enjoy the learning experience!

What do our students say?



"I started my Sign Language journey with no-experience of the language and went in with little idea of what to expect, it was nerve wracking heading into my first lesson with no deaf awareness experience. My teacher immediately made me feel at ease, understanding our lack of experience.

As the year went on, the initial nervousness around facial expression, making mistakes and getting the wrong sign structure soon subsided and I flourished.

Our lessons were fun and informative and as well as learning the language my deaf awareness improved drastically taking into account things I'd never really considered.

You'll find yourself signing with friends *even though they may not understand you*, you'll teach them new signs and they'll love it. Enjoy it and work hard, it's so satisfying."

Matthew Ford

"I was excited at progressing onto the level 2 qualification after enjoying Level 1 so much.

Level 2 is definitely a next step up and focuses more on your facial expressions, BSL word order and Non-Manual features. At the beginning I struggled quite a bit, especially with facial expression's as it is something that does not come natural to me. My tutor was so helpful, she could tell what my weaknesses were so we focused on those whenever we would practice one on one together.

It took a while but once things started to click my confidence grew and with that the fluency of my signing also improved.

My advice to anyone studying Level 2 is to sign with as many BSL users that you can to get used to the regional variation signs, I also found the Signature learning hub was a great help to me especially helping with my receptive skills".

Katherine Buckley

Your exam results

- We aim to release results to your course provider within six weeks of your assessment. They will then notify you directly of your results.
- We are unable to give assessment results to students, so if you do not receive your results within the six weeks you will need to contact your course provider.
- If you disagree with your assessment result you should contact your course provider immediately to discuss this with them. If your course provider agrees with you they will then have eight weeks from the date your result is released to appeal on your behalf.
- If you pass your exam we will issue you with your certificate. We aim to issue certificates to your course provider within four weeks of releasing your results. Your course provider will then make arrangements for you to receive it.
- You should contact your course provider in the first instance if you have any questions, queries or complaints relating to your course, assessments or results. If required the course provider will then contact us on your behalf.



Why not try our...

Online Deaf Awareness Course

Available on the Signature Shop

Created
In Partnership
Between



RN
I:D

FAQ's

We know that getting the right level of support is important to you. We have put together this list of frequently asked questions to help you find your answer quickly and as easily as possible.

How long will the course be?

All of our qualifications are unit based with recommended learning hours for each unit.

It is up to the individual course providers to decide timescales for delivery of our qualifications. Once you have decided on the qualification that you want to learn, and have found your nearest course provider, you will need to contact them directly to find out the timescales.

How much will the course cost?

Individual approved course providers will set their own costs for studying with them. Once you have found the nearest course provider to you please contact them directly for these details.

Who should I contact if I have any questions, queries or complaints?

You should contact your course provider in the first instance if you have any questions, queries or complaints relating to your course, assessments or results. If required the course provider will then contact us on your behalf.

Can I continue my studies upon completion of my course?

Should you wish to continue your journey with Signature, you can choose to move onto the next level in BSL; perhaps at your current centre. If it is not available at your current centre, we can help you find another one for you.

If you can't find an answer to your question or would like more information, please get in touch. Email communications@signature.org.uk or call 0191 383 1155



0191 383 1155

www.signature.org.uk

customersupport@signature.org.uk

Search Signature Deaf:

